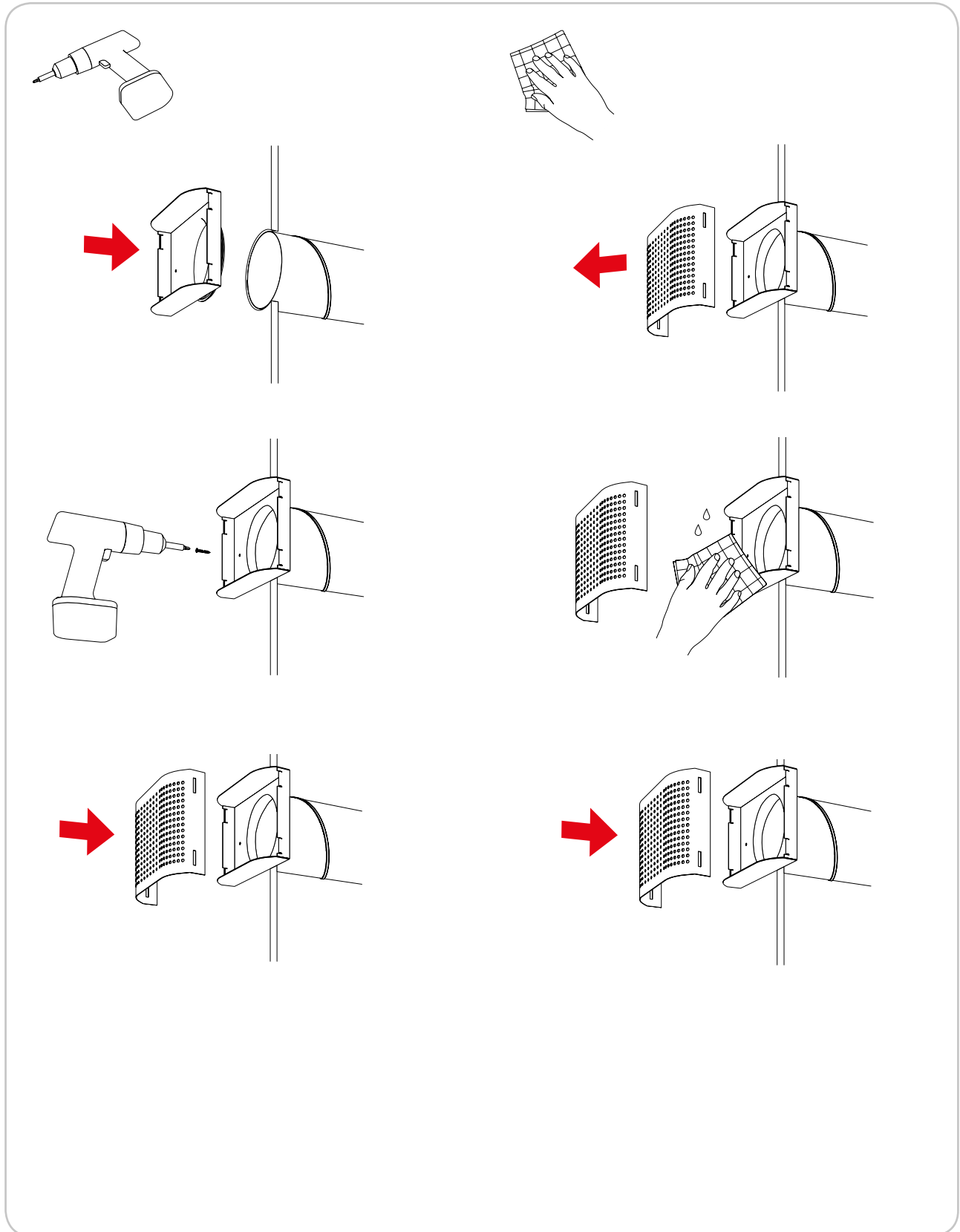




Ventil

SHH





Ventil

SHH

The diagram illustrates two measurement techniques for a SHH valve. In the first, a probe is inserted into a duct, and the digital display shows a pressure difference of 123 Δp, accompanied by a thumbs-up icon. In the second, a probe is inserted into the valve, and the digital display shows a flow rate of 123 q, also accompanied by a thumbs-up icon. Grid diagrams next to each probe indicate the specific measurement location, with a red box highlighting the correct spot.

Ø mm	Ventil montiert in	Konfiguration n [Anzahl Öffnungsumdrehungen]							
		n	2	4	6	8	10	12	14
100	Duct	k	0,7	1,2	1,7	2,3	2,7	3,1	3,6
		n	2	4	6	8	10	12	14
125	Duct	k	0,7	1,2	1,8	2,3	2,8	3,3	3,9
		n	2	4	6	8	10	12	14